



GMT MONTHLY MEMBERSHIP PROGRESS REPORT

Results as of: 5/31/2020

GMT Constitutional Area 1, Group F

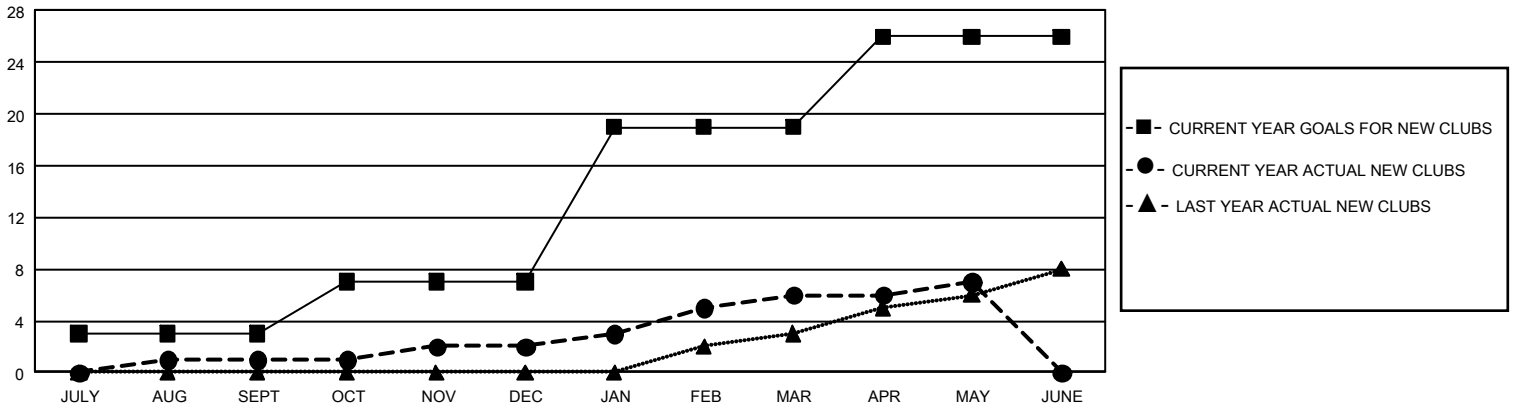
GMT: OPEN

REPORT DOES NOT INCLUDE CLUBS IN UNDISTRICTED AREAS.

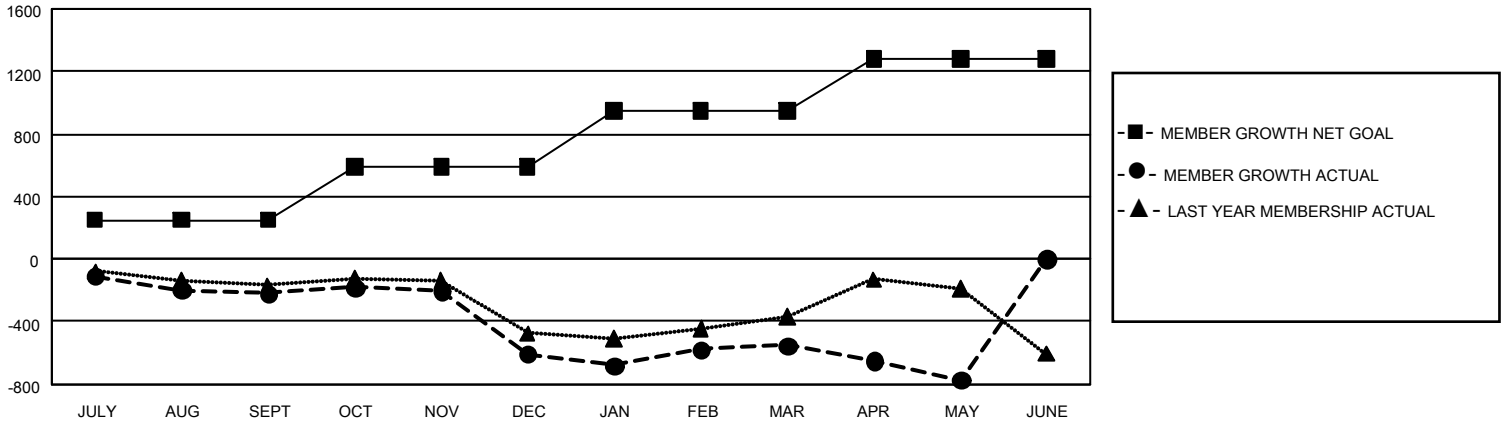
Clubs			
RESULTS FOR 2019-2020			
QUARTER	NEW CLUB GOAL	NEW CLUBS	DROPPED CLUBS
JULY/AUG/SEPT	9	1	5
OCT/NOV/DEC	12	1	16
JAN/FEB/MAR	36	4	6
APR/MAY/JUNE	21	1	2

Members			
RESULTS FOR 2019-2020			
QUARTER	MEMBER GROWTH NET GOAL	MEMBER GROWTH ACTUAL	DROPPED MEMBERS ACTUAL (including transfers)
JULY/AUG/SEPT	750	555	691
OCT/NOV/DEC	1,020	578	908
JAN/FEB/MAR	1,068	678	506
APR/MAY/JUNE	1,011	146	344

GOALS AND ACTUAL NEW CLUBS CUMULATIVE



GOALS AND ACTUAL MEMBERS CUMULATIVE



DROPPED CLUBS: 29	494 CLUBS OF 920 ADDED 1 OR MORE NEW MEMBERS	GENDER DISTRIBUTION	
		MALE 15,571 (63.04%)	FEMALE 9,129 (36.96%)
DROPPED MEMBERS		TOTAL FAMILY UNIT MEMBERS 4,425	
DECEASED 358	CLICK HERE FOR CUMULATIVE MEMBERSHIP DATA	FAMILY MEMBERS PAYING HALF DUES 2,295	
CLUB CANCELLED 253			
OTHER 1,837			
TOTAL 2,448			